

TRUCK & BUS RADIAL

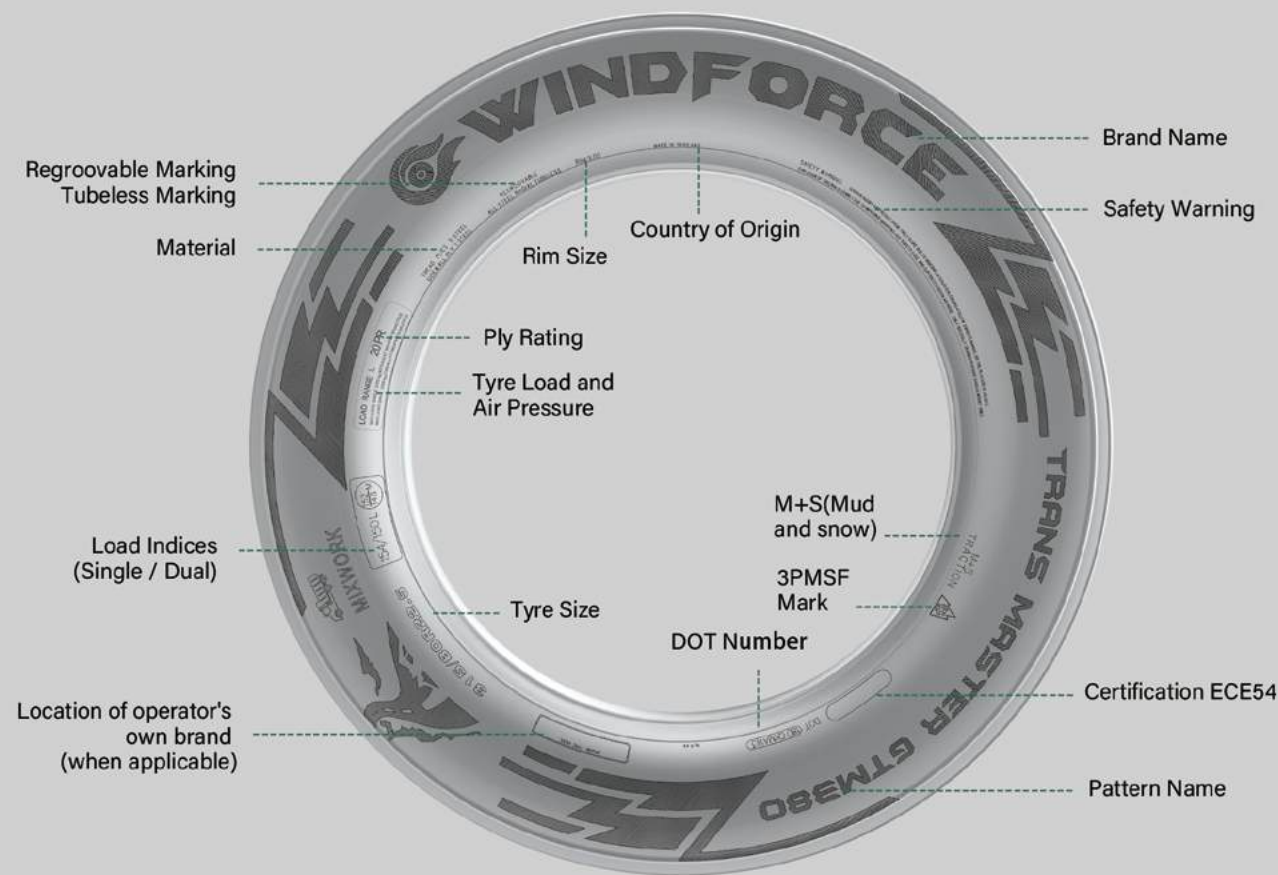
PRODUCT CATALOGUE

UPGRADING 2025



ENJOY YOUR TRIPS WITH WINDFORCE TYRES

SIDEWALL DIAGRAM



LONG HAUL



REGIONAL



MIX SERVICE



MINE

HOW TO READ THE PROFILE NAME

TRANS MASTER
E A M 260

Product family name

Product Version

S → Steer Axle D → Drive Axle
T → Trailer Axle A → All Axle

L → Long Haul R → Regional
M → Mix Service / Mine

WINDFORCE

SINCE 2012

WINDFORCE provides safety and value for the global customers, is constantly striving to create the best solutions for each application.

WINDFORCE provides a wide variety of PCR/TBR to customers, based on the demand from local market.

WINDFORCE persists on green tires to protect the environment in a concept of low carbon development and lowers the rolling resistance of tires.

WINDFORCE supplied by global TOP 10 manufacturer, has perfect quality supervision system, after-sales system and quality certification system to guarantee the product quality and improve the customer satisfaction.

TYRE CONSTRUCTION

Tread

Compounds used in the tread depend on the tire's specific application needs. WINDFORCE has chosen various compounding strategies to minimize treadwear rate, and maximize traction, fuel efficiency, and resistance to fatigue, chipping and scaling.

Belts and Casing

Thin highly adhesive assembly compounds are used in WINDFORCE's tire casing and belts to prevent separation of the steel cords.

Belt Edge Cushion

WINDFORCE tires feature a belt edge cushion to help prevent separation of the belt edges, and therefore the tread, caused by the scissoring effect of the belts.

Undertread

WINDFORCE's undertread compounds have low heat-generating characteristics, which prevent tread separation.

Inner Liner

WINDFORCE's inner liner is specially designed to minimize air seepage into adjacent areas of the tire. The quality of the inner liner is critical to prevent air from penetrating into the casing. WINDFORCE's special inner liner compound ensures a significantly longer casing life.

Bead Filler

Two or more different compounds are used in WINDFORCE's bead filler (apex rubber) to stiffen the bead for steering response and to control the flexibility of other parts of the tire.

Sidewall

WINDFORCE's special sidewall compounds are selected for high flexibility, excellent durability and high resistance to fatigue and weather cracking.

Rim Cushion

WINDFORCE's rim cushion compound is highly resistant to the heat transmitted by the rim.

TRANS MASTER FAMILY

APPLICATIONS

LONG HAUL



ESL220

L----03

STEER



EDL320

L----05

DRIVE



GSL290

L----07

STEER



GDL390

L----09

DRIVE



ESL200

L----11

STEER



EDL300

L----13

DRIVE

REGIONAL



GSR210

R----17

STEER



GDR310

R----19

DRIVE



EAR230

R----21

ALL AXLE



EDR330

R----23

DRIVE



GTR280

R----25

TRAILER

MIX SERVICE



EAM260

M----29

ALL AXLE



EDM360

M----31

DRIVE



EAM270

M----33

ALL AXLE



EAM272

M----35

ALL AXLE



EDM372

M----37

DRIVE



GTM380

M----39

TRAILER

MINE



EDM370

M----43

DRIVE



LONG HAUL

Long-range travel with consistent speed and less braking or accelerating.
Well paved road surface with fewer curves.



REGIONAL

Journeys with repeated braking, acceleration, and turning.
Well-paved road with curves and occasionally rough conditions.



MIX SERVICE

Both on and off road with aggressive, uneven or muddy road conditions.
Heavy loads at medium to slow speeds and frequent stopping.



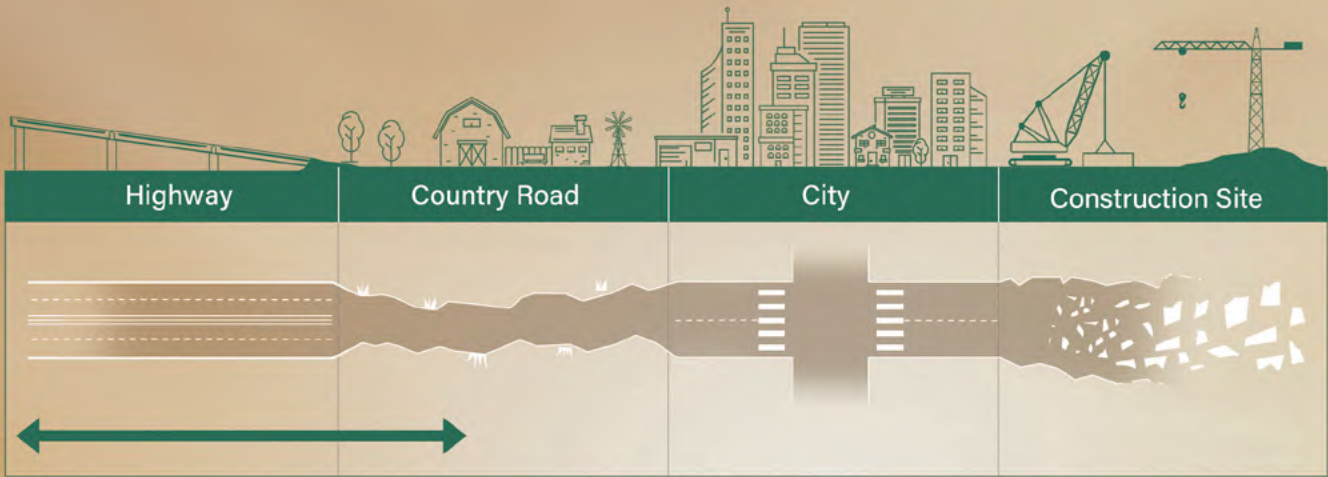
MINE

Engineered primarily for off road conditions with deep, wide treads for high mobility. Powerful construction ensures durability and long life. An open shoulder offers maneuvering while large tread blocks and special compound resist cuts and penetrations.

THE LONG HAUL SERIES



- Long distance journey with constant speed and less braking and accelerating.
- Less fuel consumption and comfortable ride.
- High mileage performance.



Special low heat compound design

Special compound design, low heat generation during tire running, low CO2, energy saving and environmental protection.



Optimized pattern design

The optimized design of pattern, high Land-sea ratio pattern design effectively reduce the rolling resistance of tires , more fuel efficient.



Advanced tire design theory

Advanced tire design concepts, make the tire longevity, green and safety.





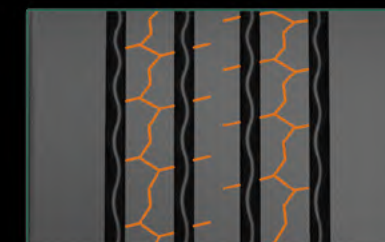
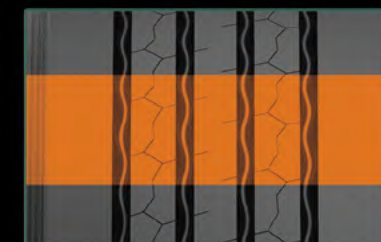
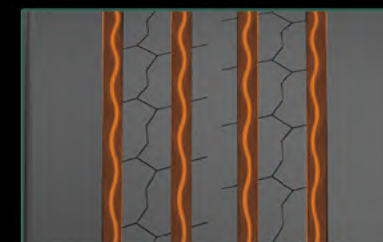
TRANS MASTER ESL220

TECHNICAL FEATURE

Four curved tread grooves ensure good drainage performance.

Special designed tread pitches ensure low external noise.

Multi kerf provides outstanding traction on wet and snow road surface.



TRANS MASTER ESL220



Steer type tyre for highway use, both long and regional haul.

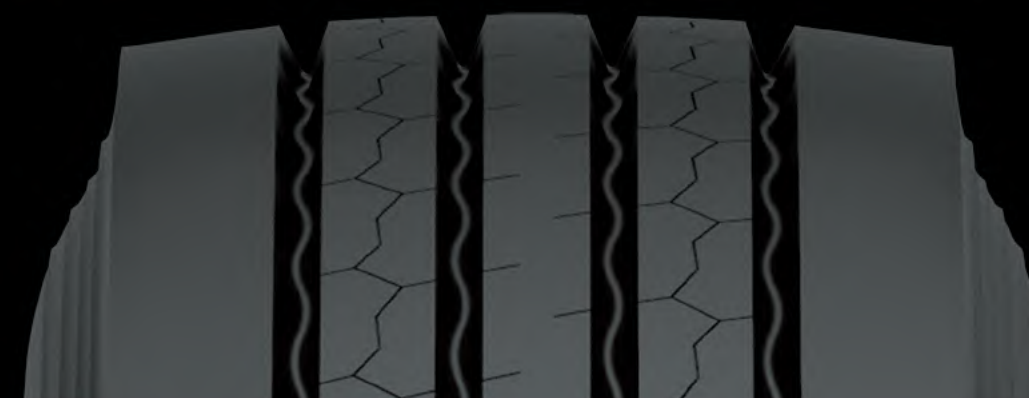


SIZE RANGE STEER



SIZE	LI/SS	PR	STANDARD RIM	TREAD DEPTH (MM)	OVERALL DIAMETER (MM)	SECTION WIDTH (MM)
7.50R16	122/118L	16	6.00G	12	805	215
10.00R20	149/146K	18	7.5	16	1054	278
11.00R20	152/149K	18	8.0	15	1085	293
12.00R20	156/153K	20	8.5	17.5	1125	315
11R22.5	148/145M	18	8.25	14.2	1054	279
12R22.5	152/149L	18	9.00	14.5	1085	300
* 275/70R22.5	152/148J(148/145L)	18	8.25	15	958	276
* 275/80R22.5	149/146M	18	8.25	14	1012	276
* 295/60R22.5	150/147M	18	9.00	13.5	932	292
295/80R22.5	152/149M	18	9.00	13.5	1044	298
* 315/60R22.5	156/150M	20	9.75	13.5	956	315
* 315/70R22.5	154/150M	20	9.00	13.5	1020	312
315/80R22.5	157/154K	20	9.00	14.5	1076	312

* DEVELOPING SIZES





TRANS MASTER EDL320

TECHNICAL FEATURE

Deep tread depth improves traction and grip on the road and extends tire life.



Optimized deep multi-blocks pattern design provides ultra driving force.



Widened tread width enhances driving stability and provides even pressure distribution.



TRANS MASTER EDL320



Superior drive tyre for highway use.

SIZE RANGE DRIVE



SIZE	LI/SS	PR	STANDARD RIM	TREAD DEPTH (MM)	OVERALL DIAMETER (MM)	SECTION WIDTH (MM)
11R22.5	148/145M	18	8.25	19	1065	279
12R22.5	152/149L	18	9.00	19	1096	300
* 275/70R22.5	152/148J(148/145L)	18	8.25	18.5	958	276
* 275/80R22.5	149/146M	18	8.25	18	1012	276
* 295/60R22.5	150/147M	18	9.00	19	932	292
295/80R22.5	152/149L	18	9.00	19	1050	298
* 315/60R22.5	156/150M	20	9.75	19	956	315
* 315/70R22.5	154/150M	20	9.00	19	1020	312
315/80R22.5	157/154K	20	9.00	19	1082	312

DEVELOPING SIZES

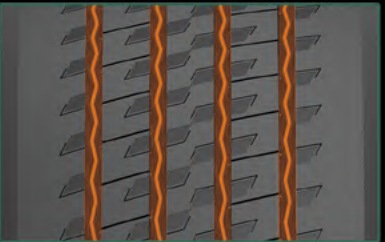




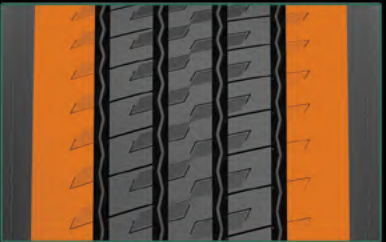
TRANS MASTER GSL290

TECHNICAL FEATURE

Fashionable pattern design, with strong longitudinal ribs and heat-releasing sipes provides excellent handling.



Optimized tire shoulder effectively reduce abnormal tread wear.



Wider and deeper pattern, with high mileage tread compound, longer product life.



TRANS MASTER GSL290



Steer type tyre for highway use, both long and regional haul.

SIZE RANGE STEER



SIZE	LI/SS	PR	STANDARD RIM	TREAD DEPTH (MM)	OVERALL DIAMETER (MM)	SECTION WIDTH (MM)
* 11R22.5	148/145L	18	8.25	15	1054	279
* 12R22.5	152/149M	18	9.00	15	1085	300
* 295/60R22.5	150/147M	18	9.00	15	932	292
* 295/80R22.5	152/149M	18	9.00	15	1044	298
* 315/60R22.5	156/150M	20	9.75	15	956	315
* 315/70R22.5	154/150M	20	9.00	15	1020	312
315/80R22.5	160/157K	22	9.00	16	1076	312
* 385/55R22.5	160L	20	12.25	15	919	386
385/65R22.5	164K	24	11.75	15	1072	389

* DEVELOPING SIZES





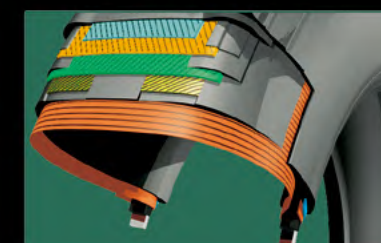
TRANS MASTER GDL390

TECHNICAL FEATURE

Impressive traction an fashion-able driving tread pattern enhances traction in all kinds of weather conditions, which can help keep drivers safer on the road.

Enhanced durability casing construction and a cap/base compound combines for better durability and exceptional re-groovability.

Deep full depth grooves with zig-zag grooves , and anti-wearing compounding provides Long original tread life with excellent traction throughout the life of the tire.



TRANS MASTER GDL390



Superior drive tyre for highway use.

SIZE RANGE DRIVE



SIZE	LI/SS	PR	STANDARD RIM	TREAD DEPTH (MM)	OVERALL DIAMETER (MM)	SECTION WIDTH (MM)
* 11R22.5	148/145K	18	8.25	21	1065	279
* 12R22.5	152/149M	18	9.00	21	1096	300
* 295/60R22.5	150/147M	18	9.00	21	932	292
* 295/80R22.5	152/149M	18	9.00	21	1050	298
* 315/60R22.5	156/150M	20	9.75	21	956	315
* 315/70R22.5	154/150M	20	9.00	21	1020	312
315/80R22.5	160/157K	22	9.00	22.5	1082	312

* DEVELOPING SIZES





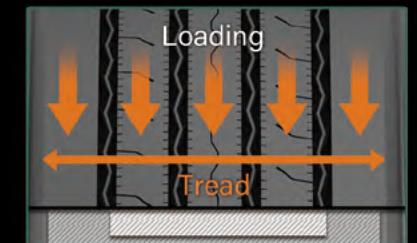
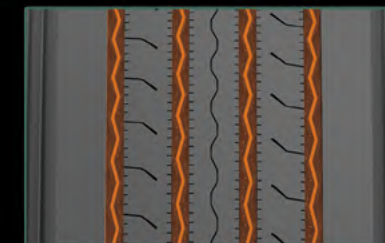
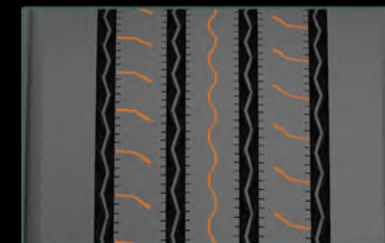
TRANS MASTER ESL200

TECHNICAL FEATURE

Lateral & semi-groove sipe optimize provide better traction and enhance even wear for superior performance.

Four curved tread grooves ensure great drainage performance.

Expanded belt provides equal road grip which results in even wear and better performance.



TRANS MASTER ESL200



Steer type tyre for highway use, both long and regional haul.

SIZE RANGE STEER



SIZE	LI/SS	PR	STANDARD RIM	TREAD DEPTH (MM)	OVERALL DIAMETER (MM)	SECTION WIDTH (MM)
11R22.5	149/146M	18	8.25	13	1054	279
11R24.5	152/149M	18	8.25	14.2	1104	279





TRANS MASTER EDL300

TECHNICAL FEATURE

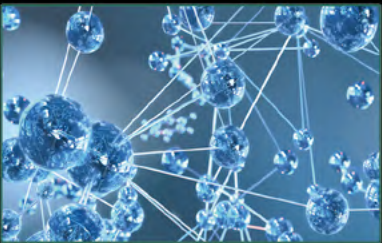
Main 4 zigzag groove provides good traction performance.



Closed shoulder delivers smooth wear, fuel efficiency and reinforced stability.



Special tread compound guarantees less fuel consumption with lower rolling resistance.



TRANS MASTER EDL300

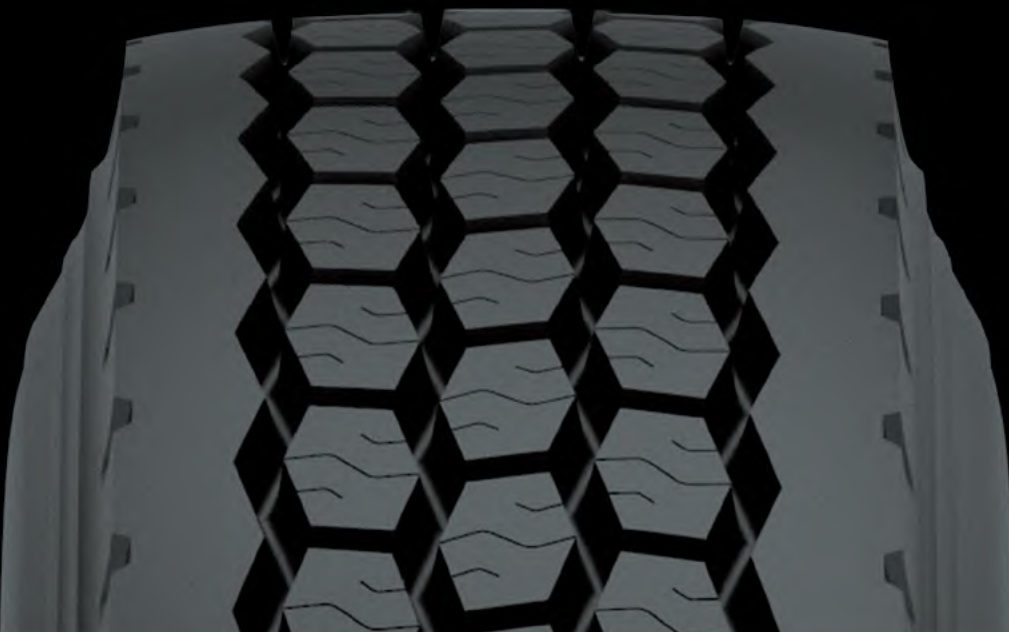


Superior drive tyre for highway use.

SIZE RANGE DRIVE



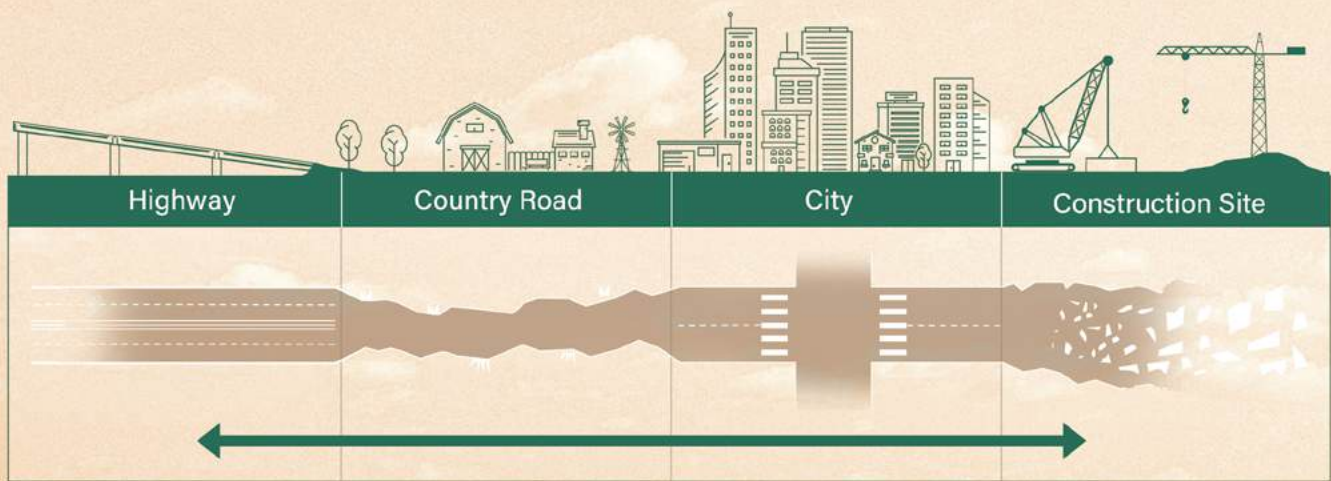
SIZE	LI/SS	PR	STANDARD RIM	TREAD DEPTH (MM)	OVERALL DIAMETER (MM)	SECTION WIDTH (MM)
11R22.5	149/146L	18	8.25	20.6	1065	279
11R24.5	152/149L	18	8.25	20.6	1116	279



THE REGIONAL SERIES



- Shorter journey with frequent braking, accelerating and turning
- Improved road grip with maximum mileage
- Exceptional tough type



Shoulder Rigidity Reinforced Design

By optimizing the overall material distribution of the tyre, the rigidity and handling stability of the tyre have been greatly improved.



Ultra-High Tensile Cord

The UHT carcass cords provide better anti-deformation performance for the tyre, while at the same time better dispersing the pressure and significantly increasing the safety performance of the tyre.



Upgraded security features

Excellent stability and durability, even in challenging weather conditions.

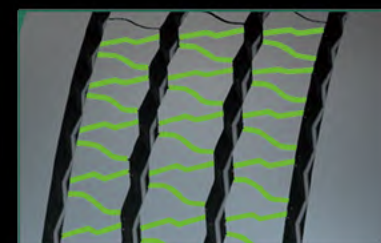




TRANS MASTER GSR210

TECHNICAL FEATURE

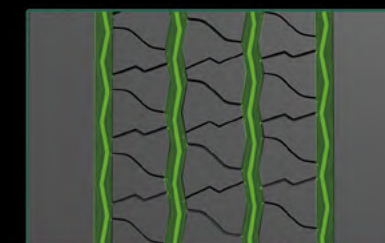
Combination of stream and zigzag grooves provides better performance for traction and driving.



Strong closed shoulder design provides a stability and better performance for even wear.



Deeper groove and wider tread provide longer tread life. Unique tread design helps decrease stone retention.



TRANS MASTER GSR210



Steer type tyre for regional use. Also recommended for drive and trailer use.

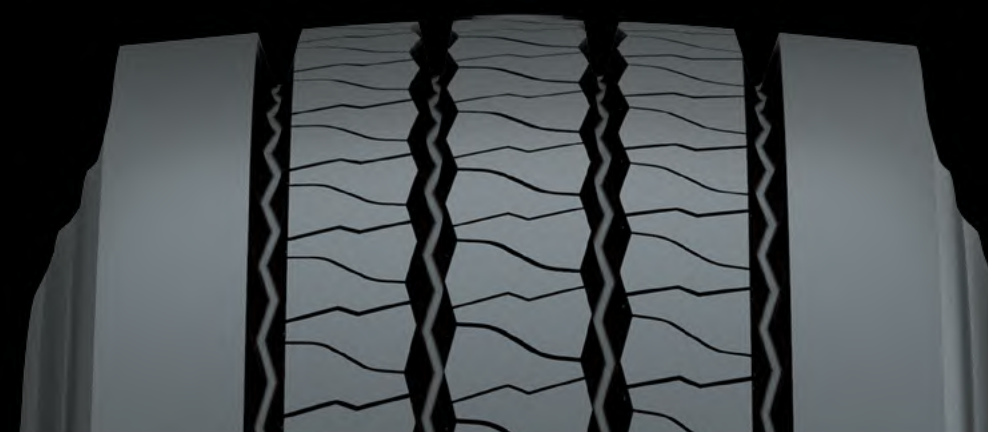


SIZE RANGE STEER



SIZE	LI/SS	PR	STANDARD RIM	TREAD DEPTH (MM)	OVERALL DIAMETER (MM)	SECTION WIDTH (MM)
* 9.5R17.5	143/141J	18	6.75	13	842	240
* 205/75R17.5	124/122M	18	6.00	12	753	205
215/75R17.5	135/133M	18	6.00	12.5	767	211
* 225/75R17.5	129/127M	18	6.75	12.5	783	226
* 225/80R17.5	129/127M	18	6.75	14	805	226
235/75R17.5	143/141M	18	6.75	13.3	797	233
* 245/70R17.5	136/134M	18	7.50	13	789	248
* 265/70R17.5	140/138M	18	7.50	14	817	262
* 225/70R19.5	129/127M	18	6.75	13	811	226
* 245/70R19.5	133/132M	18	7.50	13	839	248
* 265/70R19.5	140/138M	18	7.50	14	867	262
* 285/70R19.5	146/144M	18	8.25	14.5	895	283

* DEVELOPING SIZES





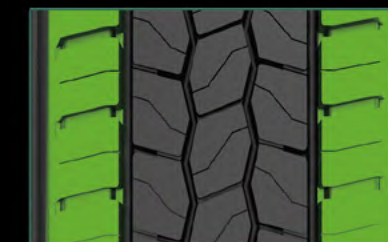
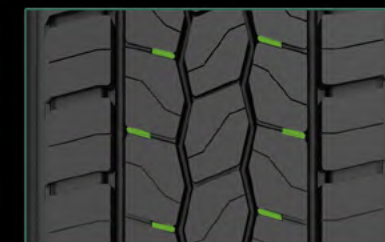
TRANS MASTER GDR310

TECHNICAL FEATURE

Wide tread with grooves enables high mileage and excellent driving performance in variable conditions.

Special tread pattern design for low rolling resistance and excellent traction performance across multi applications.

Wide open shoulder tread design provides traction and stability in all weather conditions.



TRANS MASTER GDR310



Superior drive tyre for regional use.

SIZE RANGE DRIVE



SIZE	LI/SS	PR	STANDARD RIM	TREAD DEPTH (MM)	OVERALL DIAMETER (MM)	SECTION WIDTH (MM)
* 9.5R17.5	143/141J	18	6.75	15	842	240
* 205/75R17.5	124/122M	18	6.00	14	753	205
215/75R17.5	135/133M	18	6.00	14.5	767	211
* 225/75R17.5	129/127M	18	6.75	14.5	783	226
* 225/80R17.5	129/127M	18	6.75	15	805	226
235/75R17.5	143/141M	18	6.75	15.4	797	233
* 245/70R17.5	136/134M	18	7.50	15	789	248
* 265/70R17.5	140/138M	18	7.50	15	817	262
* 225/70R19.5	129/127M	18	6.75	14.5	811	226
* 245/70R19.5	133/132M	18	7.50	15	839	248
* 265/70R19.5	140/138M	18	7.50	15	867	262
* 285/70R19.5	146/144M	18	8.25	16	895	283

* DEVELOPING SIZES

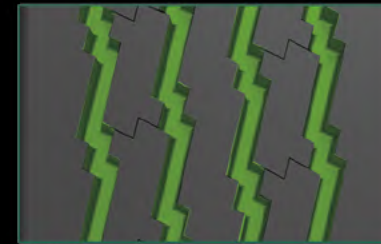




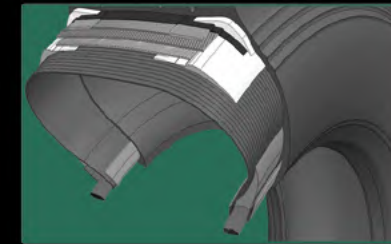
TRANS MASTER EAR230

TECHNICAL FEATURE

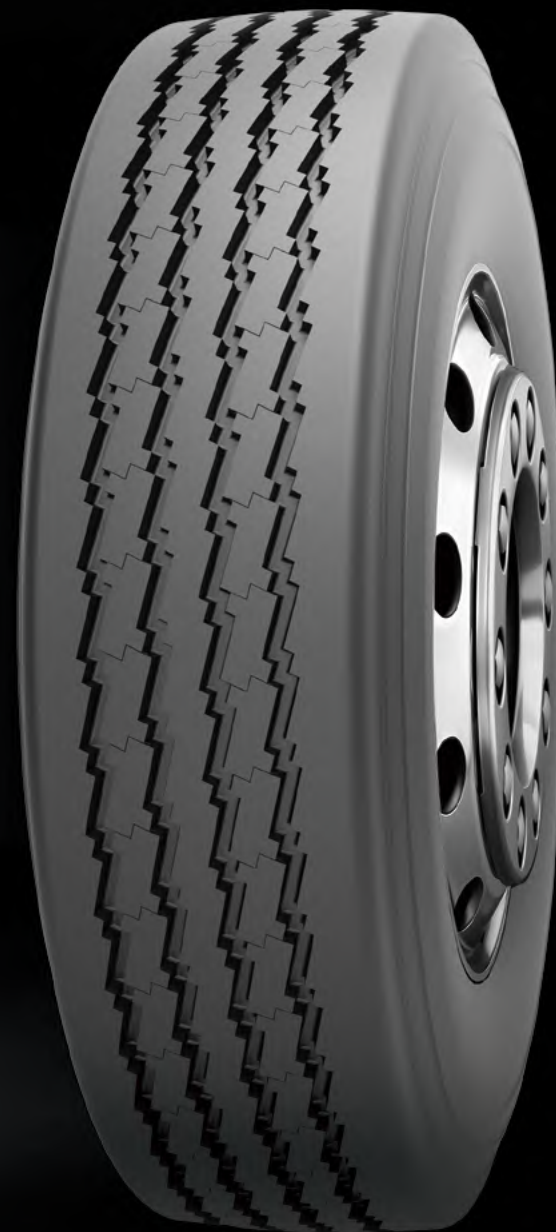
Zigzag circumferential grooves offer outstanding wet operation and even tread contact on road surfaces.



Advanced carcass design promises good footprints and avoids irregular wear.



Low heat generating and excellent high-speed driving characteristics.



TRANS MASTER EAR230

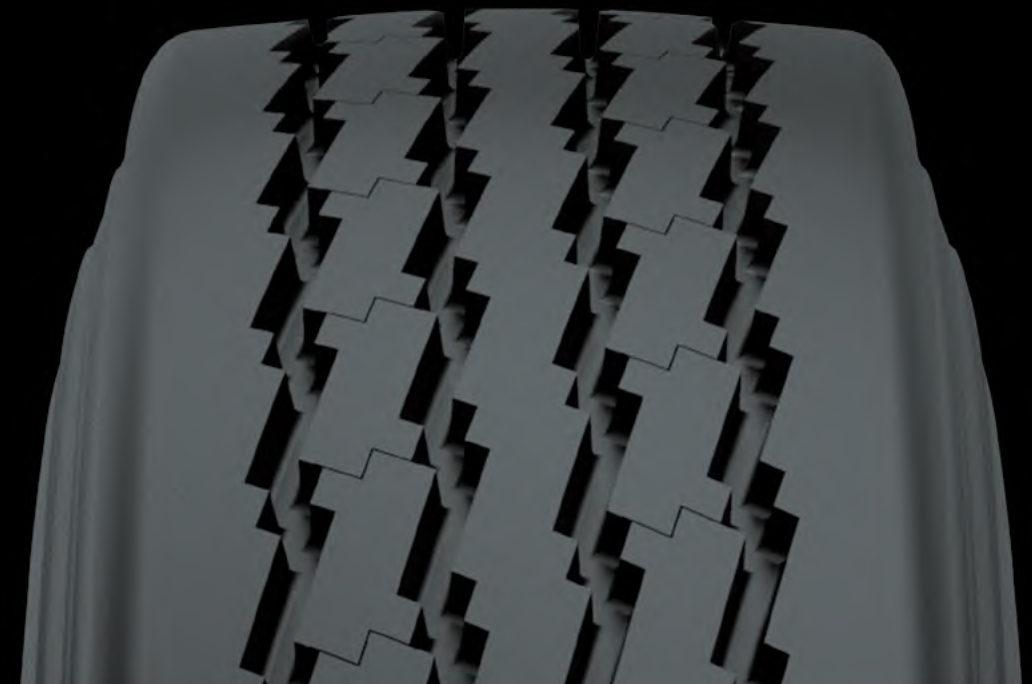


All position tyre for regional use.
Also recommended for trailer use.

SIZE RANGE ALL AXLE



SIZE	LI/SS	PR	STANDARD RIM	TREAD DEPTH (MM)	OVERALL DIAMETER (MM)	SECTION WIDTH (MM)
11R22.5	148/145M	18	8.25	13	1054	279





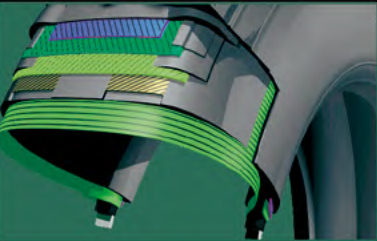
TRANS MASTER EDR330

TECHNICAL FEATURE

Premium open drive with superb traction. Central interlocking tread pattern to handle even the most demanding haul applications.



Extra strong casing for durability and excellent regroovable.



Optimised rubber compound for resisting cutting and chunking.



TRANS MASTER EDR330



Superior drive tyre for regional use.



SIZE RANGE DRIVE



SIZE	LI/SS	PR	STANDARD RIM	TREAD DEPTH (MM)	OVERALL DIAMETER (MM)	SECTION WIDTH (MM)
11R22.5	148/145M	18	8.25	19	1065	279

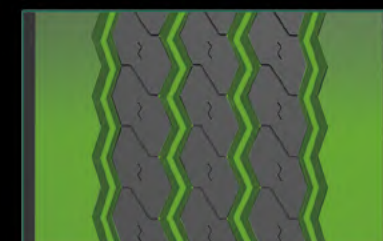




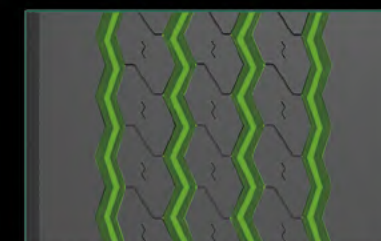
TRANS MASTER GTR280

TECHNICAL FEATURE

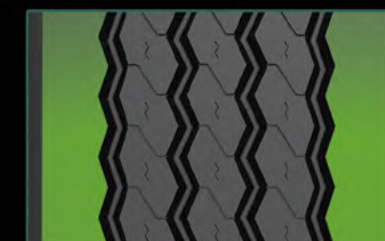
Four main grooves strengthened shoulder rib reduces deformation of outer groove and improves mileage.



Zigzag groove aids in stone rejection.



Closed shoulder allows for smooth wear, fuel efficiency and increased mileage.



TRANS MASTER GTR280



Trailer type tyre for regional use, both long and regional haul.

SIZE RANGE TRAILER



SIZE	LI/SS	PR	STANDARD RIM	TREAD DEPTH (MM)	OVERALL DIAMETER (MM)	SECTION WIDTH (MM)
* 215/75R17.5	128/126M	18	6.00	12.5	767	211
* 235/75R17.5	132/130M	18	6.75	13.3	797	233
* 245/70R17.5	136/134M	18	7.50	13	789	248
* 265/70R17.5	140/138M	18	7.50	14	817	262
* 225/70R19.5	129/127M	18	6.75	13	811	226
* 245/70R19.5	133/132M	18	7.50	13	839	248
* 265/70R19.5	140/138M	18	7.50	14	867	262
* 285/70R19.5	146/144M	18	8.25	14.5	895	283
* 275/70R22.5	152/148J(148/145L)	18	8.25	14	958	276
* 385/55R22.5	160L	20	12.25	15	919	386
385/65R22.5	164K	24	11.75	15.5	1072	389
* 425/65R22.5	165K	20	12.25	16	1124	430
* 445/65R22.5	169K	20	13.00	15	1150	444

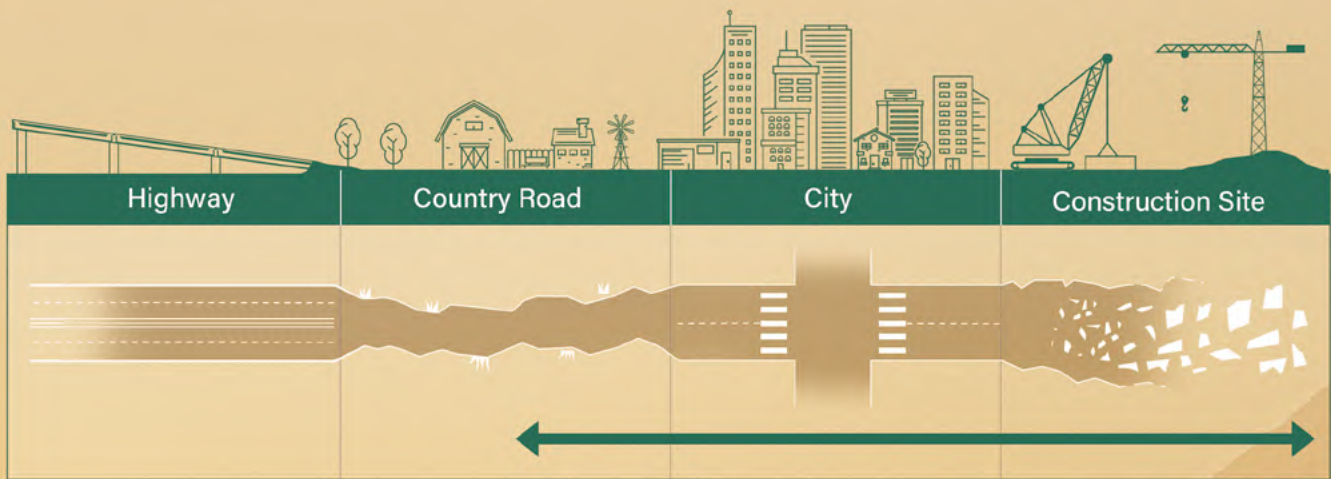
* DEVELOPING SIZES



THE MIX SERVICE SERIES



- Used both on and off road
- Heavy loads and outstanding durability
- Special protection against the damage caused by the road condition



Reinforced bead structure design

The reinforced structure of the tire bead is used to meet the load demand in the ON/OFF application, and the product life is longer.



Special cutting resistance compound design

Special cutting resistance compound helps resist chipping, chunking and tearing for a better mileage.



High tensile cord design

High tensile cord is used in tyres to ensure their load capacity and safety in harsh operating environments.





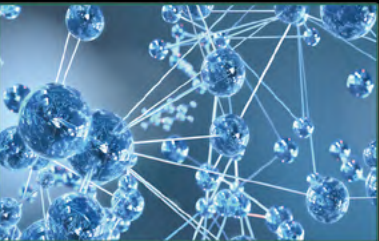
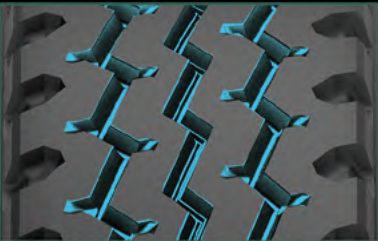
TRANS MASTER EAM260

TECHNICAL FEATURE

Four rib design with zigzag patterns for stone protection.

Deep arrowhead shoulder grooves for maximum traction in rough terrain situations.

Unique compound, with extra-deep tread design, for extended tread life.



TRANS MASTER EAM260



All position tyre for on/off road applications. Offers excellent resistance to cutting and chipping.

SIZE RANGE ALL AXLE



SIZE	LI/SS	PR	STANDARD RIM	TREAD DEPTH (MM)	OVERALL DIAMETER (MM)	SECTION WIDTH (MM)
7.00R16	118/114L	14	5.50F	10	775	200
7.50R16	122/118L	16	6.00G	11	805	215
* 8.25R16	132/128K	16	6.50H	14	855	235
* 8.25R20	139/137K	16	6.5	15	974	236
9.00R20	144/142K	16	7.0	15	1019	259
10.00R20	149/146K	18	7.5	16	1054	278
11.00R20	152/149K	18	8.0	15	1085	293
12.00R20	156/153K	20	8.5	17.5	1125	315
12.00R24	160/156K	20	8.5	14	1226	315
11R22.5	148/145M	18	8.25	15	1054	279
12R22.5	152/149L	18	9.00	14.5	1085	300
13R22.5	156/151K	20	9.75	16.5	1124	320
295/80R22.5	152/149M	18	9.00	15	1044	298
315/80R22.5	157/154K	20	9.00	15.5	1076	312

* DEVELOPING SIZES





TRANS MASTER EDM360

TECHNICAL FEATURE

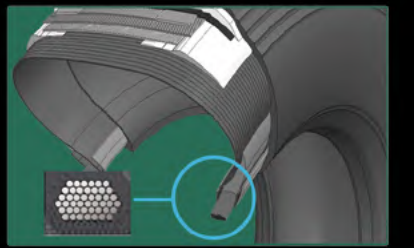
The arrow-directional pattern is adopted for excellent handling meaning better traction performance is provided even in wet and muddy conditions.



The interblock tie-bar at the centre guarantees outstanding straight driving performance and impact dispersion for blocks, thereby improving durability.



Rigid carcass structure for robust, hardwearing, safe and reliable service.



TRANS MASTER EDM360



Superior drive tyre for on/off road applications.

SIZE RANGE DRIVE



SIZE	LI/SS	PR	STANDARD RIM	TREAD DEPTH (MM)	OVERALL DIAMETER (MM)	SECTION WIDTH (MM)
11R22.5	148/145K	18	8.25	19.5	1065	279
12R22.5	152/149L	18	9.00	19.5	1096	300
13R22.5	156/151K	20	9.75	19	1136	320
295/80R22.5	152/149K	18	9.00	19.5	1050	298
315/80R22.5	157/154K	20	9.00	20	1082	312





TRANS MASTER EAM270

TECHNICAL FEATURE

Wider tread width and solid shoulder offer improved tread stiffness, leading to an increased mileage and rolling resistance.



Three zigzag grooves and multi-angular sipes improve traction and braking performance.



Polygonal block pattern provides outstanding traction and braking performance.



TRANS MASTER EAM270



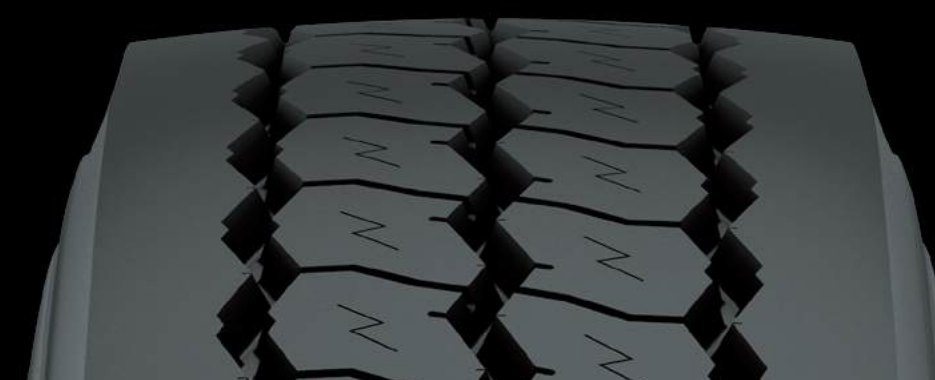
All position tyre for on/off road applications. Offers excellent resistance to cutting and chipping.

SIZE RANGE ALL AXLE



SIZE	LI/SS	PR	STANDARD RIM	TREAD DEPTH (MM)	OVERALL DIAMETER (MM)	SECTION WIDTH (MM)
* 7.00R16	118/114L	14	5.50F	10	775	200
* 7.50R16	122/118L	16	6.00G	11	805	215
* 8.25R16	132/128K	16	6.50H	14	855	235
* 8.25R20	139/137K	16	6.5	15	974	236
* 9.00R20	144/142K	16	7.0	15	1019	259
* 10.00R20	149/146K	18	7.5	16	1054	278
* 11.00R20	152/149K	18	8.0	15	1085	293
* 12.00R20	156/153K	20	8.5	17.5	1125	315
12.00R24	160/156K	20	8.5	15	1226	315
* 11R22.5	148/145M	18	8.25	15	1054	279
* 12R22.5	152/149M	18	9.00	14.5	1085	300
* 13R22.5	156/151K	20	9.75	16.5	1124	320
* 295/80R22.5	152/149M	18	9.00	15	1044	298
* 315/80R22.5	157/154L	20	9.00	15.5	1076	312

* DEVELOPING SIZES





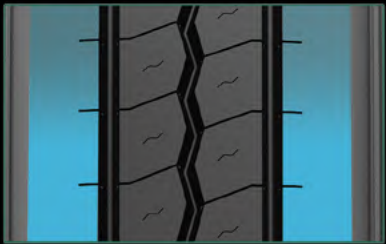
TRANS MASTER EAM272

TECHNICAL FEATURE

Combination of straight and zigzag grooves provides better performance for traction and driving.



A closed shoulder design and big block design are adopted for improved driving stability and an even wear.



Optimised rubber compound for resisting cutting and chunking.



TRANS MASTER EAM272



All position tyre for on/off road applications. Offers excellent resistance to cutting and chipping.

SIZE RANGE ALL AXLE



SIZE	LI/SS	PR	STANDARD RIM	TREAD DEPTH (MM)	OVERALL DIAMETER (MM)	SECTION WIDTH (MM)
12.00R24	160/156K	20	8.5	15	1226	315





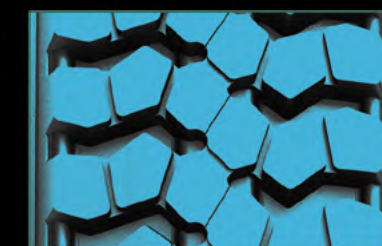
TRANS MASTER EDM372

TECHNICAL FEATURE

Optimal shoulder design - Minimises tread damage and retreading cost.

Aggressive lug design - Delivers powerful on/off-road grip, handling and stability.

Advanced carcass and compound construction - Provides excellent durability and extended tyre life due to low heat generation.



TRANS MASTER EDM372



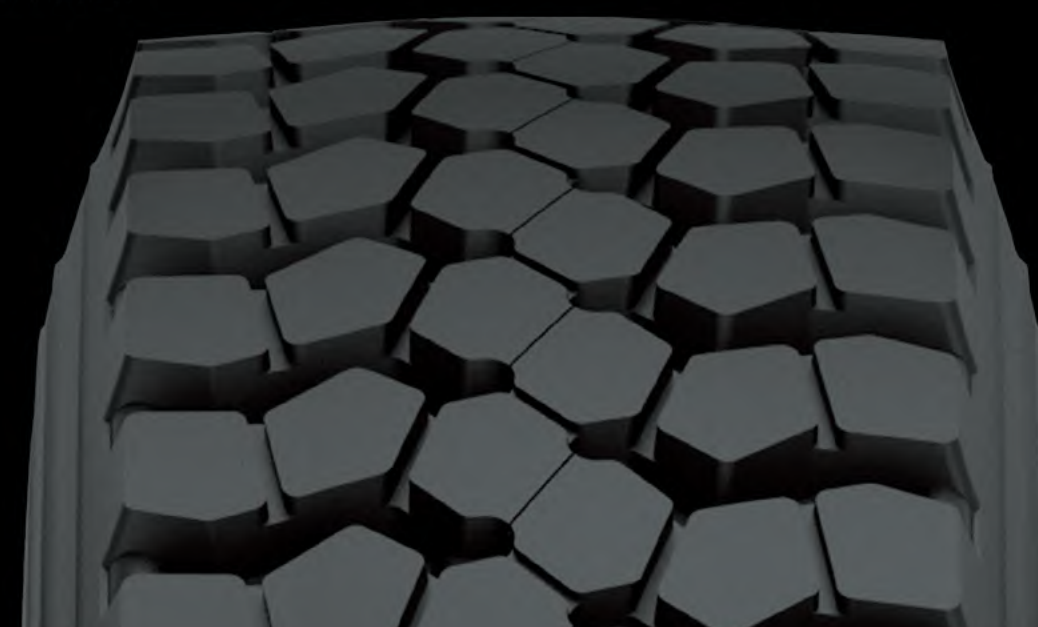
Superior drive tyre for on/off road applications.

SIZE RANGE DRIVE



SIZE	LI/SS	PR	STANDARD RIM	TREAD DEPTH (MM)	OVERALL DIAMETER (MM)	SECTION WIDTH (MM)
7.00R16	118/114L	14	5.50F	14	785	200
7.50R16	122/118L	16	6.00G	15.5	815	215
* 8.25R16	132/128K	16	6.50H	16.5	855	235
* 8.25R20	139/137K	16	6.5	16.5	974	236
9.00R20	144/142K	16	7.0	15	1019	259
10.00R20	149/146K	18	7.5	23.5	1065	278
11.00R20	152/149K	18	8.0	16	1085	293
12.00R20	156/153K	20	8.5	19.5	1136	315
12.00R24	162/160K	22	8.5	19	1238	315

* DEVELOPING SIZES





TRANS MASTER GTM380

TECHNICAL FEATURE

Extra-wide tread blocks and deep grooves ensure ultra-high mileage.

Open shoulder blocks with optimized tie-bars prevent irregular wear and provide excellent traction performance for off-road conditions.

Extra-wide grooves are designed for excellent stone rejection and improved traction.



TRANS MASTER GTM380



Trailer tyre for on/off road applications. Offers excellent resistance to cutting and chipping.

SIZE RANGE TRAILER



SIZE	LI/SS	PR	STANDARD RIM	TREAD DEPTH (MM)	OVERALL DIAMETER (MM)	SECTION WIDTH (MM)
* 385/55R22.5	160L	20	12.25	17	919	386
385/65R22.5	164K	24	11.75	18	1072	389
* 425/65R22.5	165K	20	12.25	18	1124	430
* 445/65R22.5	169K	20	13.00	18	1150	444

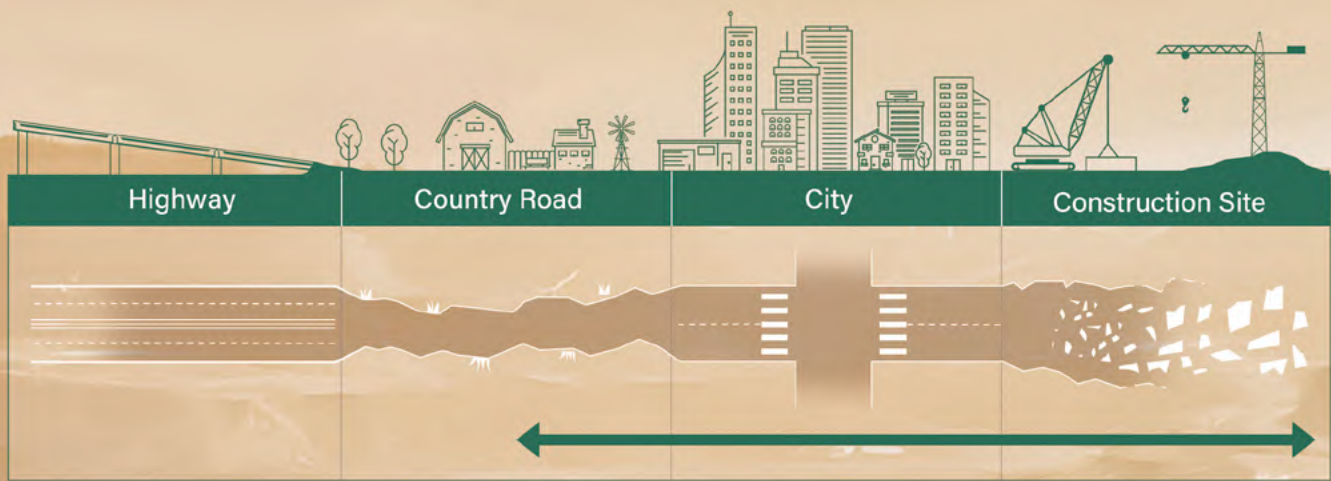
* DEVELOPING SIZES



THE MINE SERVICE SERIES



- Used both on and off road
- Heavy loads and outstanding durability
- Special protection against the damage caused by the road condition



Reinforced bead structure design

The reinforced structure of the tire bead is used to meet the load demand in the ON/OFF application, and the product life is longer.



Special cutting resistance coumpound design

Special cutting resistance coumpound helps resist chiping, chunking and tearing for a better mileage.



High tensile cord design

High tensile cord is used in tyres to ensure their load capacity and safety in harsh operating environments.





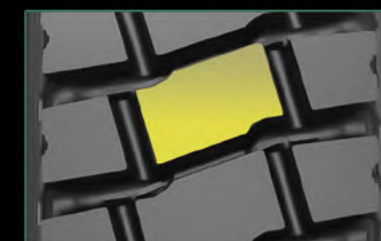
TRANS MASTER EDM370

TECHNICAL FEATURE

Aggressive lug tread pattern with open shoulder enhances powerful grip and improves self-cleaning capability.



Tread blocks massive tread blocks and specific tread compound offer superb resistance against cuts and penetrations.



optimised carcass profile with reinforced bead structure ensures excellent durability.



TRANS MASTER EDM370



Drive axle, Off use in mining, construction and logging operations.

SIZE RANGE DRIVE



SIZE	LI/SS	PR	STANDARD RIM	TREAD DEPTH (MM)	OVERALL DIAMETER (MM)	SECTION WIDTH (MM)
10.00R20	149/146F	18	7.5	20	1065	278
11.00R20	152/149F	18	8.0	20	1096	293
12.00R20	156/153F	20	8.5	21	1136	315
12.00R24	164/161F	24	8.5	23	1238	315
11R22.5	148/145J	18	8.25	19.5	1065	279
* 12R22.5	152/149M	18	9.00	20	1096	300
13R22.5	156/151F	20	9.75	19	1136	320
295/80R22.5	152/149J	18	9.00	20	1050	298
315/80R22.5	157/154J	20	9.00	19	1082	312

* DEVELOPING SIZES



MADE IN CHINA TRANS MASTER FAMILY

PATTERN	SIZE	LI/SS	PR	APPLICATION	AXLE	STANDARD RIM	TREAD DEPTH (MM)	OVERALL DIAMETER (MM)	SECTION WIDTH (MM)
	7.50R16	122/118L	16	LONGHAUL	ST/TR	6.00G	12	805	215
	10.00R20	149/146K	18	LONGHAUL	ST/TR	7.5	16	1054	278
	11.00R20	152/149K	18	LONGHAUL	ST/TR	8.0	15	1085	293
	12.00R20	156/153K	20	LONGHAUL	ST/TR	8.5	17.5	1125	315
	11R22.5	148/145M	18	LONGHAUL	ST/TR	8.25	14.2	1054	279
	12R22.5	152/149L	18	LONGHAUL	ST/TR	9.00	14.5	1085	300
	* 275/70R22.5	152/148J(148/145L)	18	LONGHAUL	ST/TR	8.25	15	958	276
	* 275/80R22.5	149/146M	18	LONGHAUL	ST/TR	8.25	14	1012	276
	* 295/60R22.5	150/147M	18	LONGHAUL	ST/TR	9.00	13.5	932	292
	295/80R22.5	152/149M	18	LONGHAUL	ST/TR	9.00	13.5	1044	298
	* 315/60R22.5	156/150M	20	LONGHAUL	ST/TR	9.75	13.5	956	315
	* 315/70R22.5	154/150M	20	LONGHAUL	ST/TR	9.00	13.5	1020	312
	11R22.5	148/145M	18	LONGHAUL	DR	8.25	19	1065	279
	12R22.5	152/149L	18	LONGHAUL	DR	9.00	19	1096	300
	* 275/70R22.5	152/148J(148/145L)	18	LONGHAUL	DR	8.25	18.5	958	276
	* 275/80R22.5	149/146M	18	LONGHAUL	DR	8.25	18	1012	276
	* 295/60R22.5	150/147M	18	LONGHAUL	DR	9.00	19	932	292
	295/80R22.5	152/149L	18	LONGHAUL	DR	9.00	19	1050	298
	* 315/60R22.5	156/150M	20	LONGHAUL	DR	9.75	19	956	315
	* 315/70R22.5	154/150M	20	LONGHAUL	DR	9.00	19	1020	312
	315/80R22.5	157/154K	20	LONGHAUL	DR	9.00	19	1082	312
	* 11R22.5	148/145L	18	LONGHAUL	ST/TR	8.25	15	1054	279
	* 12R22.5	152/149M	18	LONGHAUL	ST/TR	9.00	15	1085	300
	* 295/60R22.5	150/147M	18	LONGHAUL	ST/TR	9.00	15	932	292
	* 295/80R22.5	152/149M	18	LONGHAUL	ST/TR	9.00	15	1044	298
	* 315/60R22.5	156/150M	20	LONGHAUL	ST/TR	9.75	15	956	315
	* 315/70R22.5	154/150M	20	LONGHAUL	ST/TR	9.00	15	1020	312
	315/80R22.5	160/157K	22	LONGHAUL	ST/TR	9.00	16	1076	312
	* 385/55R22.5	160L	20	LONGHAUL	ST/TR	12.25	15	919	386
	385/65R22.5	164K	24	LONGHAUL	ST/TR	11.75	15	1072	389
	* 11R22.5	148/145K	18	LONGHAUL	DR	8.25	21	1065	279
	* 12R22.5	152/149M	18	LONGHAUL	DR	9.00	21	1096	300
	* 295/60R22.5	150/147M	18	LONGHAUL	DR	9.00	21	932	292
	* 295/80R22.5	152/149M	18	LONGHAUL	DR	9.00	21	1050	298
	* 315/60R22.5	156/150M	20	LONGHAUL	DR	9.75	21	956	315
	* 315/70R22.5	154/150M	20	LONGHAUL	DR	9.00	21	1020	312
	315/80R22.5	160/157K	22	LONGHAUL	DR	9.00	22.5	1082	312
	11R22.5	149/146M	18	LONGHAUL	ST/TR	8.25	13	1054	279
	11R24.5	152/149M	18	LONGHAUL	ST/TR	8.25	14.2	1104	279
	11R22.5	149/146L	18	LONGHAUL	DR	8.25	20.6	1065	279
	11R24.5	152/149L	18	LONGHAUL	DR	8.25	20.6	1116	279
	* 9.5R17.5	143/141J	18	REGIONAL	ST/TR	6.75	13	842	240
	* 205/75R17.5	124/122M	18	REGIONAL	ST/TR	6.00	12	753	205
	215/75R17.5	135/133M	18	REGIONAL	ST/TR	6.00	12.5	767	211
	* 225/75R17.5	129/127M	18	REGIONAL	ST/TR	6.75	12.5	783	226
	* 225/80R17.5	129/127M	18	REGIONAL	ST/TR	6.75	14	805	226
	235/75R17.5	143/141M	18	REGIONAL	ST/TR	6.75	13.3	797	233
	* 245/70R17.5	136/134M	18	REGIONAL	ST/TR	7.50	13	789	248
	* 265/70R17.5	140/138M	18	REGIONAL	ST/TR	7.50	14	817	262
	* 225/70R19.5	129/127M	18	REGIONAL	ST/TR	6.75	13	811	226
	* 245/70R19.5	133/132M	18	REGIONAL	ST/TR	7.50	13	839	248
	* 265/70R19.5	140/138M	18	REGIONAL	ST/TR	7.50	14	867	262
	* 285/70R19.5	146/144M	18	REGIONAL	ST/TR	8.25	14.5	895	283
	* 9.5R17.5	143/141J	18	REGIONAL	DR	6.75	15	842	240
	* 205/75R17.5	124/122M	18	REGIONAL	DR	6.00	14	753	205
	215/75R17.5	135/133M	18	REGIONAL	DR	6.00	14.5	767	211
	* 225/75R17.5	129/127M	18	REGIONAL	DR	6.75	14.5	783	226
	* 225/80R17.5	129/127M	18	REGIONAL	DR	6.75	15	805	226
	235/75R17.5	143/141M	18	REGIONAL	DR	6.75	15.4	797	233
	* 245/70R17.5	136/134M	18	REGIONAL	DR	7.50	15	789	248
	* 265/70R17.5	140/138M	18	REGIONAL	DR	7.50	15	817	262
	* 225/70R19.5	129/127M	18	REGIONAL	DR	6.75	14.5	811	226
	* 245/70R19.5	133/132M	18	REGIONAL	DR	7.50	15	839	248
	* 265/70R19.5	140/138M	18	REGIONAL	DR	7.50	15	867	262
	* 285/70R19.5	146/144M	18	REGIONAL	DR	8.25	16	895	283
	11R22.5	148/145M	18	REGIONAL	TR	8.25	13	1054	279
									

PATTERN	SIZE	LI/SS	PR	APPLICATION	AXLE	STANDARD RIM	TREAD DEPTH (MM)	OVERALL DIAMETER (MM)	SECTION WIDTH (MM)
	11R22.5	148/145M	18	REGIONAL	DR	8.25	19	1065	279
	* 215/75R17.5	128/126M	18	REGINAL	TR	6.00	12.5	767	211
	* 235/75R17.5	132/130M	18	REGINAL	TR	6.75	13.3	797	233
	* 245/70R17.5	136/134M	18	REGINAL	TR	7.50	13	789	248
	* 265/70R17.5	140/138M	18	REGINAL	TR	7.50	14	817	262
	* 225/70R19.5	129/127M	18	REGINAL	TR	6.75	13	811	226
	* 245/70R19.5	133/132M	18	REGINAL	TR	7.50	13	839	248
	* 265/70R19.5	140/138M	18	REGINAL	TR	7.50	14	867	262
	* 285/70R19.5	146/144M	18	REGINAL	TR	8.25	14.5	895	283
	* 275/70R22.5	152/148J(148/145L)	18	REGINAL	TR	8.25	14	958	276
	* 385/55R22.5	160L	20	REGINAL	TR	12.25	15	919	386
	* 385/65R22.5	164K	24	REGINAL	TR	11.75	15.5	1072	389
	* 425/65R22.5	165K	20	REGINAL	TR	12.25	16	1124	430
	* 445/65R22.5	169K	20	REGINAL	TR	13.00	15	1150	444
	7.00R16	118/114L	14	MIXWORK	ALL	5.50F	10	775	200
	7.50R16	122/118L	16	MIXWORK	ALL	6.00G	11	805	215
	* 8.25R16	132/128K	16	MIXWORK	ALL	6.50H	14	855	235
	* 8.25R20	139/137K	16	MIXWORK	ALL	6.5	15	974	236
	9.00R20	144/142K	16	MIXWORK	ALL	7.0	15	1019	259
	10.00R20	149/146K	18	MIXWORK	ALL	7.5	16	1054	278
	11.00R20	152/149K	18	MIXWORK	ALL	8.0	15	1085	293
	12.00R20	156/153K	20	MIXWORK	ALL	8.5	17.5	1125	315
	12.00R24	160/156K	20	MIXWORK	ALL	8.5	14	1226	315
	11R22.5	148/145M	18	MIXWORK	ALL	8.25	15	1054	279
	12R22.5	152/149L	18	MIXWORK	ALL	9.00	14.5	1085	300
	13R22.5	156/151K	20	MIXWORK	ALL	9.75	16.5	1124	320
	295/80R22.5	152/149M	18	MIXWORK	ALL	9.00	15	1044	298
	315/80R22.5	157/154K	20	MIXWORK	ALL	9.00	15.5	1076	312
	11R22.5	148/145K	18	MIXWORK	DR	8.25	19.5	1065	279
	12R22.5	152/149L	18	MIXWORK	DR	9.00	19.5	1096	300
	13R22.5	156/151K	20	MIXWORK	DR	9.75	19	1136	320
	295/80R22.5	152/149K	18	MIXWORK	DR	9.00	19.5	1050	298
	315/80R22.5	157/154K	20	MIXWORK	DR	9.00	20	1082	312
	* 7.00R16	118/114L	14	MIXWORK	ALL	5.50F	10	775	200
	* 7.50R16	122/118L	16	MIXWORK	ALL	6.00G	11	805	215
	* 8.25R16	132/128K	16	MIXWORK	ALL	6.50H	14	855	235
	* 8.25R20	139/137K	16	MIXWORK	ALL	6.5	15	974	236
	* 9.00R20	144/142K	16	MIXWORK	ALL	7.0	15	1019	259
	* 10.00R20	149/146K	18	MIXWORK	ALL	7.5	16	1054	278
	* 11.00R20	152/149K	18	MIXWORK	ALL	8.0	15	1085	293
	* 12.00R20	156/153K	20	MIXWORK	ALL	8.5	17.5	1125	315
	12.00R24	160/156K	20	MIXWORK	ALL	8.5	15	1226	315
	* 11R22.5	148/145M	18	MIXWORK	ALL	8.25	15	1054	279
	* 12R22.5	152/149M	18	MIXWORK	ALL	9.00	14.5	1085	300
	* 13R22.5	156/151K	20	MIXWORK	ALL	9.75	16.5	1124	320
	* 295/80R22.5	152/149M	18	MIXWORK	ALL	9.00	15	1044	298
	* 315/80R22.5	157/154L	20	MIXWORK	ALL	9.00	15.5	1076	312
	12.00R24	160/156K	20	MIXWORK	ALL	8.5	15	1226	315
	7.00R16	118/114L	14	MIXWORK	DR	5.50F	14	785	200
	7.50R16	122/118L	16	MIXWORK	DR	6.00G	15.5	815	

MADE IN THAILAND TERRA MASTER FAMILY

ALL ROUTES+



TERRA MASTER
GSA10



TERRA MASTER
GDA20

LONG HUAL



TERRA MASTER
GSL80



TERRA MASTER
GDL90



TERRA MASTER
GTL30

REGIONAL



TERRA MASTER
GAR60



TERRA MASTER
GDR70



TERRA MASTER
GTRS0

MIX SERVICE



TERRA MASTER
GAM66



TERRA MASTER
GDM77



TERRA MASTER
GAMSS

PATTERN	SIZE	LI/SS	PR	APPLICATION	AXLE	TREAD DEPTH (MM)
 TERRA MASTER GSA10	295/80R22.5	154/149M	18	ALL ROUTES	ST/TR	14
	315/70R22.5	156/150L	20	ALL ROUTES	ST/TR	15
	315/80R22.5	156/153L(154/151M)	20	ALL ROUTES	ST/TR	16
	385/55R22.5	160K(158L)	20	ALL ROUTES	ST/TR	15
	385/65R22.5	160K(158L)	20	ALL ROUTES	ST/TR	15
	385/65R22.5	164K	24	ALL ROUTES	ST/TR	15
 TERRA MASTER GDA20	295/80R22.5	152/149M	18	ALL ROUTES	DR	19
	315/70R22.5	154/150L(152/148M)	20	ALL ROUTES	DR	19
	315/80R22.5	156/153L(154/151M)	20	ALL ROUTES	DR	21
 TERRA MASTER GSL80	315/60R22.5	154/150L(152/148M)	20	LONG HAUL	ST	11
	315/70R22.5	156/150L	20	LONG HAUL	ST	12
	385/55R22.5	160K(158L)	20	LONG HAUL	ST	15
 TERRA MASTER GDL90	295/60R22.5	150/147K(149/146L)	18	LONG HAUL	DR	13.5
	315/60R22.5	154/150K(152/148L)	20	LONG HAUL	DR	14
	315/70R22.5	154/150L	20	LONG HAUL	DR	13.5
 TERRA MASTER GTL30	385/55R22.5	160K(158L)	20	LONG HAUL	TR	15
	385/65R22.5	160K(158L)	20	LONG HAUL	TR	15
	385/65R22.5	164K	24	LONG HAUL	TR	15
	435/50R19.5	160J(156K)	20	LONG HAUL	TR	12
	445/45R19.5	160J	20	LONG HAUL	TR	12
 TERRA MASTER GAR60	205/75R17.5	124/122M (126/124G)	14	REGIONAL	ST/TR	12
	215/75R17.5	128/126M	14	REGIONAL	ST/TR	13
	215/75R17.5	135/133J	16	REGIONAL	ST/TR	13
	225/75R17.5	129/127M	14	REGIONAL	ST/TR	13
	235/75R17.5	132/130M	14	REGIONAL	ST/TR	14
	235/75R17.5	143/141J	16	REGIONAL	ST/TR	14
	245/70R19.5	136/134M	16	REGIONAL	ST/TR	13
	245/70R19.5	143/141J	18	REGIONAL	ST/TR	13
	245/70R17.5	136/134M	16	REGIONAL	ST/TR	13
	245/70R17.5	141/140J	18	REGIONAL	ST/TR	13
	265/70R19.5	140/138M	16	REGIONAL	ST/TR	13
	265/70R19.5	143/141J	18	REGIONAL	ST/TR	13
	285/70R19.5	146/144M	16	REGIONAL	ST/TR	13
	285/70R19.5	150/148J	18	REGIONAL	ST/TR	13
 TERRA MASTER GDR70	205/75R17.5	124/122M	14	REGIONAL	DR	15
	215/75R17.5	128/126M	14	REGIONAL	DR	15
	225/75R17.5	129/127M	14	REGIONAL	DR	16
	235/75R17.5	132/130M	14	REGIONAL	DR	16
	245/70R17.5	136/134M	16	REGIONAL	DR	15
	245/70R19.5	136/134M	16	REGIONAL	DR	15
	265/70R19.5	140/138M	16	REGIONAL	DR	16
	285/70R19.5	146/144M	16	REGIONAL	DR	16
 TERRA MASTER GTRS0	385/65R22.5	160K(158L)	20	REGIONAL	TR	15
	385/65R22.5	164K	24	REGIONAL	TR	15
	425/65R22.5	165K	20	REGIONAL	TR	16
	445/65R22.5	169K	20	REGIONAL	TR	16
 TERRA MASTER GAM66	13R22.5	156/151K	20	MIXWORK	ALL	16.5
	315/80R22.5	156/153K	20	MIXWORK	ALL	17.5
 TERRA MASTER GDM77	13R22.5	156/151K	20	MIXWORK	DR	23
	315/80R22.5	156/153K	20	MIXWORK	DR	23
 TERRA MASTER GAMSS	385/65R22.5	160K(158L)	20	MIXWORK	ALL	18
	385/65R22.5	164K	24	MIXWORK	ALL	18
	425/65R22.5	165K	20	MIXWORK	ALL	18
	445/65R22.5	169K	20	MIXWORK	ALL	18



QINGDAO LANDSPIDER TIRE CORP.,LTD

WWW.LANDSPIDERTIRE.COM